



IBA

FIXTURE FEATURES

Mid level, designer, suspended mount luminaire, ideal for use in converted industrial space. For use in indoor applications where low glare, high quality and ease of installation are required. Comes with single basket shaped perforated metal shield. Available in lengths from 24 to 48 inches. Suitable for surface or suspended mounting.

- **Construction** - Die and brake formed, heavy gauge cold rolled steel housing assembly. Precision formed, cold rolled steel reflector. Die formed, perforated cold rolled steel shielding. Metal shielding flexes over mounting studs on housing, for easy installation and re-lamping. End caps may be butted together for continuous row mounting. Knockouts are provided for flexible conduit attachment.
- **Optics** - Shields are perforated for direct illumination and contain a translucent opal white acrylic overlay diffuser for visual comfort. Indirect reflectors are precision formed and contoured to provide soft, low glare indirect illumination while maintaining high efficiency and a wide uniform lighting distribution. Optional reflectors are available with a slotted upright component.
- **Electrical** - All electrical components are UL or CSA approved. Lamp holders provided ensure positive lamp retention. Lamp holders with rotary locks are available. Electronic ballast is standard. See Product Selection for optional ballasts. The standard voltage is 120V, 60Hz, or as specified. Other Voltage and frequency ratings are also available. Sufficient knockouts are provided on the back and ends for connections and through wiring.
- **Finish** - Powder painted white matte visible surfaces.
- **Mounting** - Knock out is provided for stem mounting. Optional aircraft cable assemblies and canopy sets are available. Mounting holds are provided. Optional V (Speedy) hangers accommodate chain (not provided).
- **Regulatory** - Approved to UL and CSA standards (UL, or equivalent, marked only when specified)
- **Applications** - Studio Lofts, Retail Stores, Athletic Centers, & Corridors.

FLUORESCENT

OPTIONS

- Slotted full reflector, painted white
- Dimming ballasts
- Polycarbonate rotary lock lampholders

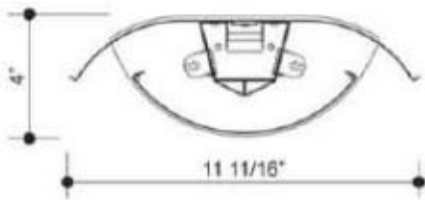
OPTIONAL ADDERS

- Emergency lighting power pack
- Lamps included but not installed
- Speedy Hangers
- Aircraft cable and canopy sets
- Stem and canopy sets
- Suspension set for chain mounting

PARAFLEX INDUSTRIES

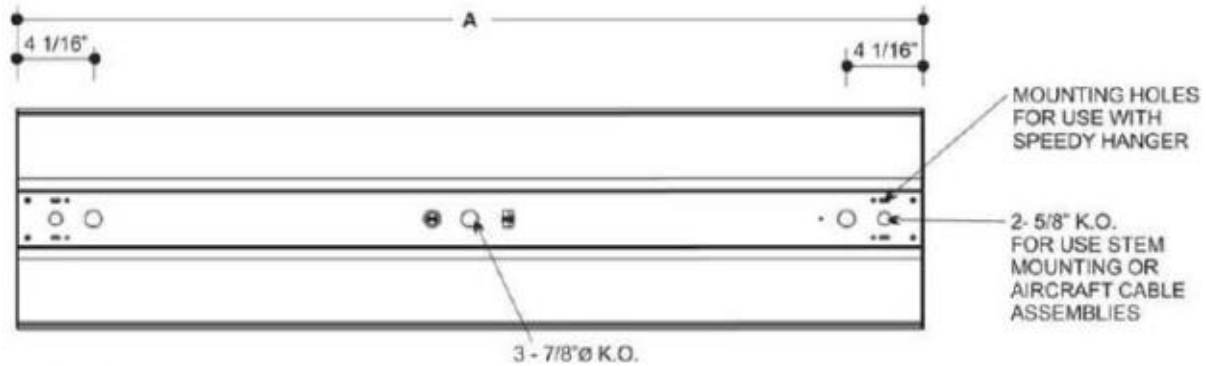
The Manufacturers Source For
Lighting Parts And Products

A Series - Industrial Basket



Cross Section

MODEL	NOMINAL LENGTH A (in.)
224	24
236	36
248	48



248 Shown

IBA 2 48 - T8 32 P 120 - Options

No. Of Lamps
Typical Number of lamps in Cross Section
2

Nom. Length (in.)
24
36
48

Lamp Type
T5
T5HO
T8
T8HO
T8VHO

Lamp Watts
See Table below

Ballast Type
N - Instant Start
P - Prog. Start
R - Rapid Start

Voltage
120 - 120V
240 - 240V
277 - 277V
347 - 347V
600 - 600V
UNV - 120-277V
UN2 - 277-347V
UN4 - 347-480V

Lamp Watts

Length	Nominal Lamp Watts				
	T5	T5HO	T8	T8HO	T8VHO
24	14	24	17	-	-
36	21	39	25	-	-
48	28	54	32	44	84

Ballast Options

- B01 Ballast Disconnect - In-line Power Disconnect (CSA-UL Req'd For Voltages above 150v)
- B02 Dimming Addressable Digital (dali)
- B03 Dimming Low Voltage
- B04 Dimming Line Voltage
- B05 Frequency Universal DC-60hz
- B06 Low Temperature
- B08 Ballast - High Ballast Factor
- B09 Ballast - Low Ballast Factor
- B30 Emergency USA Lighting Battery Pack 1-lamp 3000 Lumen
- B31 Emergency CDN Lighting Battery Pack 1-lamp
- B32 Emergency CDN Lighting Battery Pack 2-lamp
- B33 Emergency USA Lighting Battery Pack 1-lamp
- B34 Emergency USA Lighting Battery Pack 2-lamp

Housing Construction Options

- C27 Uplight Slots

Lampholder Options

- H4 Lampholder Rotary Lock

Packaging Options (select one only)

- K0 Pack Bulk
- K1 Pack Single

Mounting Options (select one only)

- M01 Aircraft Cable & Canopy Set (72-in length)
- M23 Mounting Speedy Hanger
- M26(xx) Mounting Stem and Canopy 3/8-in IP (5/8-in OD) (specify length (xx) 6-in increments)
- M30 Mounting Suspension Set (speedy hangers with 48-in chains)

Reflector Options (solid full white is standard)

- R03 Reflector Slotted Full White

Approval and Rating Options

- X6 USA Market

FLUORESCENT