

The CV303L series is a 12"x12" vandal resistant fixture that can be mounted on the wall or ceiling. It is designed to provide long life and high reliability in those applications where an extra level of protection and security is required.

The housing can be mounted directly over a standard 4" outlet box or surface wired through ½" conduit entries. Suitable for wet locations, these lights are typically mounted 8 – 14 feet high.

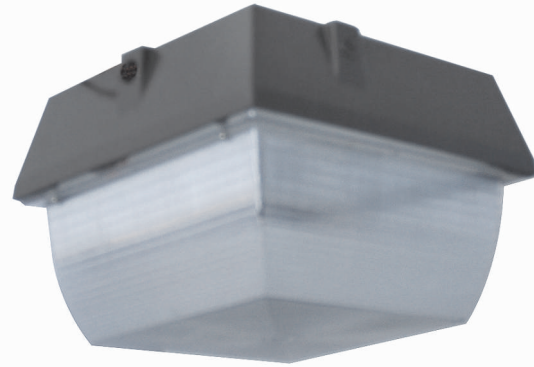
Features & Benefits

- Uses up to 88% less energy when compared to the HID equivalent
- Instant on/off operation
- Resistant to shock and vibration
- Surged Protected
- Unique optical design provides optimum light distribution
- 4000K color temperature ±
- CRI > 60
- Power factor > 0.98
- Produces no UV radiation
- Contains no Mercury
- 5 year limited warranty

Applications

- Schools
- Shopping Centers
- Correctional Facilities
- Parks and Swimming Pools Facilities
- Any Public Building

For photometric data and IES files, please contact the factory.



LED VANDAL
RESISTANT

Product Specifications

Housing:

Durable die cast aluminum with ½" threaded conduit entries for surface wiring. A continuous one piece gasket ensures a weather tight seal

Lens:

Clear Prismatic polycarbonate diffuser with UV inhibitors

LEDs:

Array of 32 x 1 watt Philips Lumileds, providing 3200lm.

Operating Voltage:

100 ~ 277 VAC 50/60Hz

Finish:

Dark bronze powder paint finish is standard*

Approvals / Ratings:



UNDERWRITERS
LABORATORIES



IP66 rated

Conforms to UL8750 & EN61347 safety regulations

Part Number Listing

Part No.	Series Number	Efficacy	Operating Voltage	Input Watts
R920002	CV303L	76lm/W	100 ~ 277 VAC 50/60Hz	34W

* Other finishes may be available. Contact the factory for details. ‡ Contact factory for details and other options.

So that we may continue to supply the best available products, specifications may change. Check our web site for the latest updates and product improvements. Contact our engineering staff if you require further application information.

Dimensions

